

JAPAN, OSAKA THE PEAK NAMBA

FAST FACTS



Project Name	The Peak Namba
Room Size	27.26-27.72 sq.m.
No. of Floors	12 floors
No. of Units	33 units + 1 shop
Tenure	Freehold
Completion	September 2020



Developer:

株式会社BUD

JV Partner:

DWG®

This document has been prepared by DWG for advertising and general information only. DWG does not guarantee, warrant or represent that the information contained in this document is correct. Any interested party should undertake their own inquiries as to the accuracy of the information. DWG excludes unequivocally all inferred or implied terms, conditions and warranties arising out of this document and excludes all liability for loss and damages arising therefrom. Purchasers are advised to conduct their own due diligence and are informed that, as in any investment, commercial risks are involved.

- All forms of investment carry risks, including the risk of losing all the invested amount. Such activities may not be suitable for everyone.
- This is an overseas investment. As overseas investments carry additional financial, regulatory and legal risks, investors are advised to do the necessary checks and research on the investment beforehand.
- The government of the property stated here-in imposes certain restrictions on foreign ownership of properties. Buyers will need to fulfil criteria before being able to purchase.

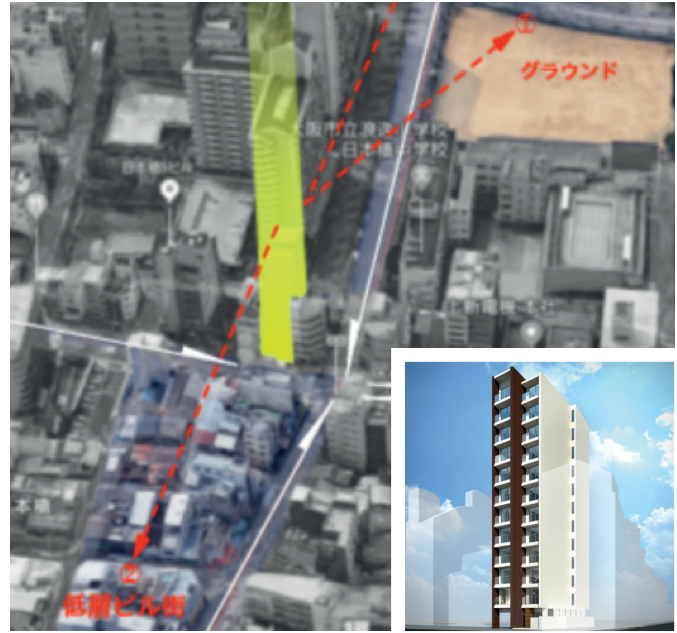
DWG is a real estate investment company which owns foreign properties through its various subsidiaries, and co-invests with property developers as joint venture partner.

JAPAN, OSAKA

THE PEAK NAMBA

NAMBA, THE MOST PERFECT LOCATION IN OSAKA

SURROUNDING LIFESTYLES



- 1 min walk to Nipponbashi DENDEN Town (one of the largest commercial district for electronics in Japan alongside Akihabara in Tokyo)
- 6 mins walk to Namba Parks
- 7 mins walk to Nankai Electric Railway (Namba Station)
- 9 mins walk to Namba City
- 10 mins walk to Takashimaya

SURROUNDING CITIES



KYOTO

京都（駅）まで
車：約1時間（51,3km）
電車：約1時間

To Kyoto (station)
Car: about 1 hour (51,3km)
Train: about 1 hour



KOBE

神戸三宮駅まで
タクシー：約40～50分
電車：約50分

To Kobe Sannomiya Station
Taxi: about 40 to 50 minutes
Train: about 50 minutes



NARA

近鉄奈良（駅）まで
車：35分～1時間
電車：約1時間10分

To Kintetsu Nara (station)
Car: 35 minutes - 1 hour
Train: about 1 hour 10 minutes

Developer:

株式会社BUD

JV Partner:

DWG®

This document has been prepared by DWG for advertising and general information only. DWG does not guarantee, warrant or represent that the information contained in this document is correct. Any interested party should undertake their own inquiries as to the accuracy of the information. DWG excludes unequivocally all inferred or implied terms, conditions and warranties arising out of this document and excludes all liability for loss and damages arising therefrom. Purchasers are advised to conduct their own due diligence and are informed that, as in any investment, commercial risks are involved.

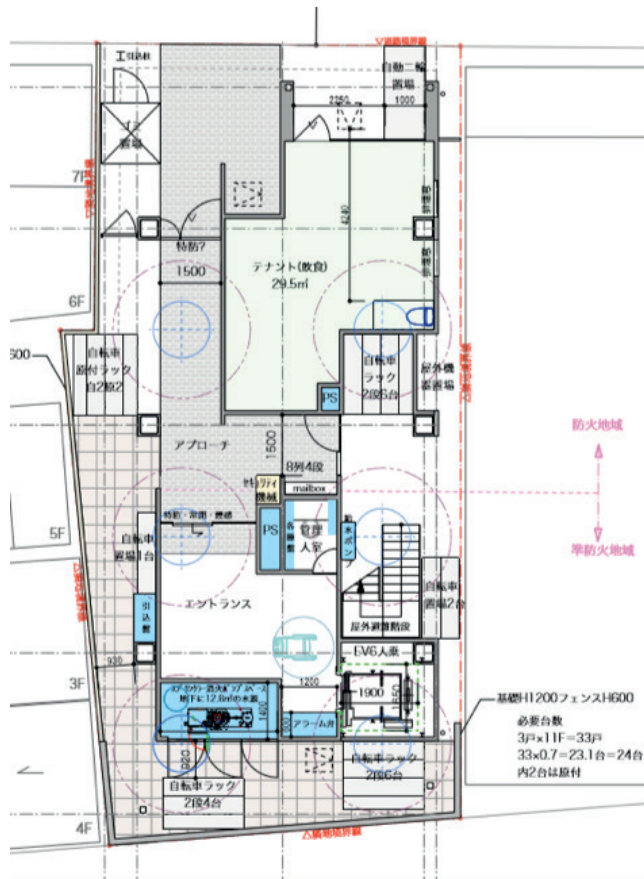
• All forms of investment carry risks, including the risk of losing all the invested amount. Such activities may not be suitable for everyone.
• This is an overseas investment. As overseas investments carry additional financial, regulatory and legal risks, investors are advised to do the necessary checks and research on the investment beforehand.
• The government of the property stated here-in imposes certain restrictions on foreign ownership of properties. Buyers will need to fulfil criteria before being able to purchase.
• DWG is a real estate investment company which owns foreign properties through its various subsidiaries, and co-invests with property developers as joint venture partner.

JAPAN, OSAKA

THE PEAK NAMBA

FLOOR & UNIT PLAN

LAND PLAN



FLOOR PLAN



INTERIOR



Developer:

株式会社BUD

JV Partner:

DWG®

This document has been prepared by DWG for advertising and general information only. DWG does not guarantee, warrant or represent that the information contained in this document is correct. Any interested party should undertake their own enquiries as to the accuracy of the information. DWG excludes unequivocally all inferred or implied terms, conditions and warranties arising out of this document and excludes all liability for loss and damages arising therefrom. Purchasers are advised to conduct their own due diligence and are informed that, as in any investment, commercial risks are involved.

- All forms of investment carry risks, including the risk of losing all the invested amount. Such activities may not be suitable for everyone.
- This is an overseas investment. As overseas investments carry additional financial, regulatory and legal risks, investors are advised to do the necessary checks and research on the investment beforehand.
- The government of the property stated here-in imposes certain restrictions on foreign ownership of properties. Buyers will need to fulfil criteria before being able to purchase. DWG is a real estate investment company which owns foreign properties through its various subsidiaries, and co-invests with property developers as joint venture partner.

JAPAN, OSAKA

THE PEAK NAMBA

P R O J E C T H I G H L I G H T S

- ◆ Osaka will host the 2025 World Expo forecasted to attract more than 28 million domestic and foreign guests. The Japanese Government predicts 2 trillion yen (US\$17.7billion) in revenue and growth of real estate markets.
- ◆ Golden Opportunity of Osaka. The city will play host to the G20 summit in 2019, Tokyo Olympics in 2020 & the Gaming Expo in 2024. With these tourist attracting events supplementing Japan's already strong R&D industries. The world will see a golden age for Japan, with Osaka ranking as the most important city in the world.
- ◆ Casino License & World Expo 2025. Upgrading and construction of infrastructure, will boost investment and asset appreciation.
- ◆ Located in the prime Minami district, one of the busiest core area in Osaka.
- ◆ 7-mins to Namba Station (operated by Nankai Electric Railway), an important transportation hub in the Minami district of Osaka; also leads to well-known tourist attractions like Dōtonbori and Shinsaibashi
- ◆ Osaka is perfectly positioned in the west Japan, also the economic powerhouse of the Kansai Region. Equipped with sprawling network of train lines, Osaka makes the great base to get to famous neighbouring cities like Kyoto, Kobe, Nara and beyond. Hence, boosting up the legalized Airbnb-style accommodations in Osaka,
- ◆ An exquisite development within a prime location, connecting you to the best of Osaka has to offer:
 - 1-min walk to Nipponbashi DENDEN Town (Osaka's Akihabara)
 - 6-min to Namba Parks
 - 7-min to Nankai Electric Railway (Namba Station)
 - 9-min to Namba City
 - 10-min to Takashimaya

PURCHASE PROCESS

Booking Fee: HKD 50,000

5% Payment: 10 working days from reservation

25% payment: 1 month after signing contracts

Balance Payment: On Completion

DOCUMENTS REQUIRED

Copies of each purchaser's passport & ID

LOAN PROCESS

Up to 60% loan available.
Please contact us if you need more details.

Developer:

株式会社BUD

JV Partner:

DWG[®]

This document has been prepared by DWG for advertising and general information only. DWG does not guarantee, warrant or represent that the information contained in this document is correct. Any interested party should undertake their own inquiries as to the accuracy of the information. DWG excludes unequivocally all inferred or implied terms, conditions and warranties arising out of this document and excludes all liability for loss and damages arising therefrom. Purchasers are advised to conduct their own due diligence and are informed that, as in any investment, commercial risks are involved.

- All forms of investment carry risks, including the risk of losing all the invested amount. Such activities may not be suitable for everyone.
- This is an overseas investment. As overseas investments carry additional financial, regulatory and legal risks, investors are advised to do the necessary checks and research on the investment beforehand.
- The government of the property stated here-in imposes certain restrictions on foreign ownership of properties. Buyers will need to fulfil criteria before being able to purchase. DWG is a real estate investment company which owns foreign properties through its various subsidiaries, and co-invests with property developers as joint venture partner.